

KNITS

SPRING 2011

Try a little something new - The spring 2011 issue of Interweave Knits plays with fabric, fiber, and construction for rich, subtle, knitterly effects.

ON THE SURFACE

Ruffle, gather, and ruche: explore how a few gathering stitches here or a dramatic increase along an edge there can transform plain knitted fabric. How can ruffles and ruching change the shape of a garment? Could you use gathers to define the bust, create a waist, dictate flow and drape? Explore layers, draping, and asymmetry with surface manipulation that informs garment construction and shape as well.

Think: Garments and accessories for women and children - layering pieces; trans-seasonal fabrics.

Look: Organic, asymmetrical, ethereal-crunchy: Linen and linen blends, slubby yarns. Transparent guages. Not-too-tailored silhouettes. Flowing, grown up boho.



Break out your bobbins - intarsia grows up with modern colorblock and geometry. Explore intarsia with contrast yarn or texture panels - combine intarsia with cables or lace - work a large-scale graphic motif in closely related yarns shades. Forget paint-by-number colors: explore how sections of different yarn textures can create a picture.

Think: Sweaters for men, women, and children; bold home accessories.

Look: Clean-edged, sleek, urban. No fussy flowers - rather, geometric print-looks, subtly rich texture. Simple, timeless shapes.

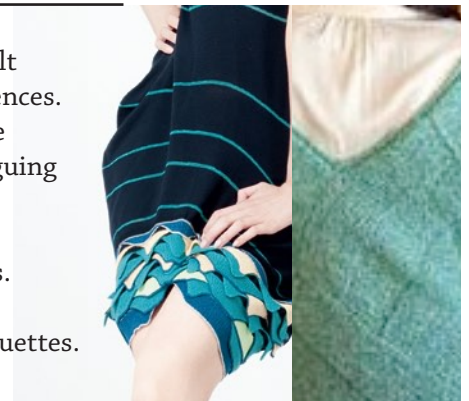
MODERN INTARSIA

MIDCENTURY MODULAR

Push modular knitting and pieced constructions to a new place with garments built out of geometric shapes, mathematical curves, and clever stripe and texture sequences. Modular cables and lace, short-rows, log cabin constructions, polygons beyond the square, large-scale entrelac. Break out of the sweater equation with new and intriguing building blocks.

Think: Garments and accessories for men, women, and children. Home accessories.

Look: Texture and color richness set into clean, tailored frames. Neat, classic silhouettes. Richly layered fabrics.



COMPLETE LACE



Move away from lace as surface adornment: instead, think about adjusting motifs, using them to create shape, rendering the fabric essential to the silhouette. Ogees used to shape curves; diminishing motifs at a sweater yoke; doily and art lace inspirations.

Think: Sweaters for women and children; home accessories.

Look: Arty, rich, feminine without being too sweet. Bubble shapes, swingly hemlines, flow, drape.