



reconnecting communities with nature

The 2005 Urban Sustainability Forum was developed by the City of Seattle, in partnership with the Urban Land Institute, to stimulate a public dialogue on how to plan, design and develop Seattle into a 21st century city.

The forum is designed to inspire Seattle's business leaders and citizens to create a shared vision of urban sustainability, and to begin planning for a brighter future. Forum speakers are nationally recognized leaders in sustainable community development.

Our goal is to transform Seattle's city center, urban centers and urban villages into vibrant, pedestrian-friendly, and transit-oriented communities that are powered by renewable energy, celebrate healthy ecosystems, and provide opportunities for all of Seattle's citizens. We already have some momentum, and are identifying and implementing better strategies to move us toward urban sustainability.

For more information, contact:
Lynne Barker
City of Seattle, Department of
Planning & Development
(206) 684-0806
lynne.barker@seattle.gov

ULI Seattle 

A district council of the Urban Land Institute



City of Seattle

Urban Sustainability Forum

A public dialogue on how to develop Seattle into a 21st century city.

The Business Case for Sustainable Development

Monday, Feb. 28, 2005
5:30-7:00 pm
Seattle Central Library
Auditorium

Ed McMahon, *Author & Senior Resident Fellow for Sustainable Development, Urban Land Institute*

McMahon holds the Charles Fraser Chair on Sustainable Development at the Urban Land Institute, where he is nationally known as an inspiring and thought provoking speaker and leading authority on sustainable development, land conservation, urban design, and historic preservation.

Power to the People

Friday, March 18, 2005
7:00-9:00 pm
UW Meany Hall

Svend Auken, *Former Danish Minister for Energy & the Environment, Member of the Danish Parliament*

Auken is largely responsible for the policies that made Denmark the leader in renewable energy that it is today. He has been a persuasive advocate of sustainable energy throughout his tenure with parliament, and through his work in international venues such as the UN and the EU.

Local Politics of Sustainability

Monday, April 4, 2005
5:30-7:00 pm
Seattle Central Library
Auditorium

Robert Costanza, *Director of the Gund Institute for Ecological Economics, University of Vermont*

Dr. Costanza has a PhD. in systems ecology, a minor in economics, and a Masters degree in Architecture and Urban and Regional Planning. His research in valuation of ecosystem services, biodiversity, and natural capital, when used to inform land use policies and incentives will promote sustainable community development.

Designing & Building Healthy Places

Wednesday, April 27, 2005
6:00-7:30 pm
Location TBD

Richard Jackson, MD, MPH, *State Public Health Officer, California Department of Health Services*

Dr. Jackson will be discussing the critically important links between environmental health and the built environment. He will discuss how the built environment shapes behavior and promotes, or damages, our health in ways that are far more profound than most public health professionals realize.

Civic Innovation & Sustainable Communities

Monday, May 16, 2005
5:30-7:00 pm
Seattle Central Library
Auditorium

William Shutkin, *President & CEO, The Orton Family Foundation*

Formerly an environmental lawyer and professor, Shutkin will share his views on creating sustainable communities for the 21st century. He proposes that it starts with civic innovators: people who can see across and beyond traditional constituencies and practices to define new realities and navigate the difficult pathways to get there.

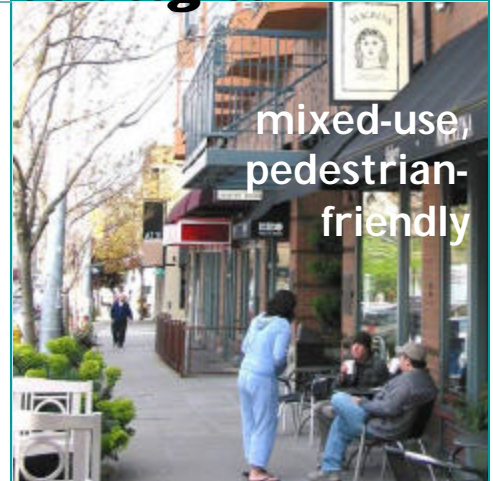
Urban Sustainability Strategies

Public Spaces, Public Life

June 3-8, 2005 (date TBD)
5:30-7:00 pm
Location TBD

Jan Gehl, *Founding Partner, Gehl Architects: Urban Quality Consultants, Professor of Urban Design, School of Architecture, Royal Danish Academy of Fine Arts*

Gehl will present his research on public spaces and public life in Copenhagen and cities in Europe, North America, Asia and Australia. He integrates cutting edge of technologies with urban design strategies to enhance people's experience of everyday life in the public realm.



mixed-use,
pedestrian-
friendly

Seattle's Ecological Footprint Present & Future

Monday, June 20, 2005
5:30-7:00 pm
Seattle Central Library
Auditorium

Dahlia Chazan, *Co-Director for the Sustainability Indicators Program, Redefining Progress*

Chazan will report back to the City on our community's Ecological Footprint—the land area required to support current local lifestyles. She will discuss several scenarios for land use planning policies that will lower Seattle's Ecological Footprint as the City develops over the next ten years and into further into the future.



transit-oriented

Green Development = Economic Development

Monday, July 11, 2005
5:30-7:00 pm
Seattle Central Library
Auditorium

Bert Gregory, *President, Mithun*

Dennis Wilde, *Senior Project Manager, Gerding / Edlin Development*

Gregory, a national leader in green building and sustainable communities, will discuss a future vision for urban sustainability as developed in Portland's Lloyd Crossing Sustainable Urban Design Plan and Catalyst Project for the Portland Development Commission.

Wilde has been active in construction and real estate development since 1967 and has 20 years experience in urban planning and design. He will discuss the Brewery Blocks project located in Portland's historic Pearl District, and show how green building increased their return on investment and strengthened economic development.



green

LEED™ for Neighborhood Development

Monday, August 8, 2005
5:30-7:00 pm
Seattle Central Library
Auditorium

Doug Farr, *Principal, Farr Associates and Co-Chair of the LEED™ for Neighborhoods*

Farr will provide an update on the development of the LEED™ for Neighborhood Development standard being developed through a partnership between the US Green Building Council, Smart Growth Coalition, and Congress for New Urbanism. He will discuss how the standard can be applied to the redevelopment of Seattle neighborhoods.



community-
focused